



How to create National EuroVelo Coordination Centres (NECC)

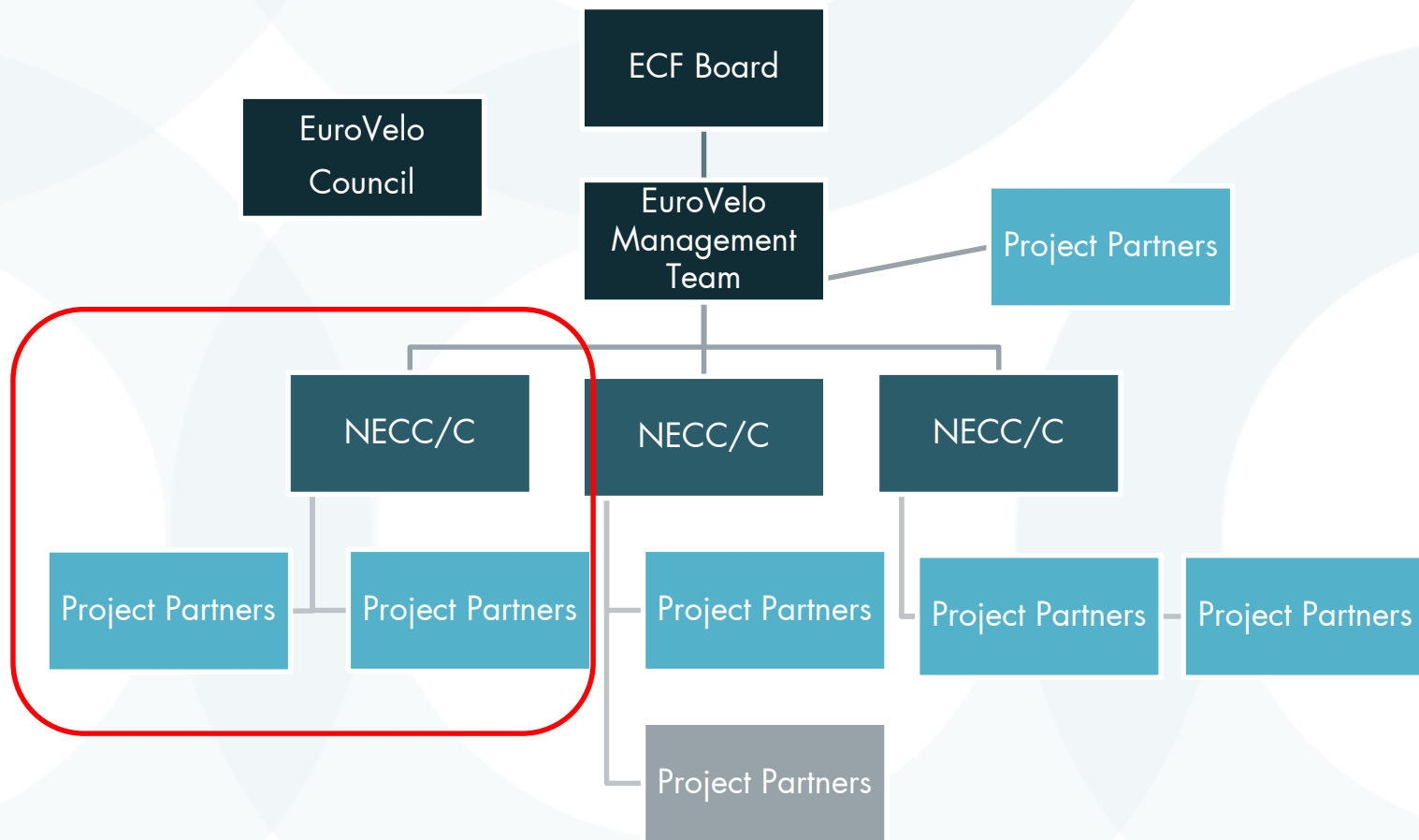
An introduction

EuroVelo Management Team
eurovelo@ecf.com

Rue Franklin, 28 1000 Brussels, Belgium Phone: +32 2 880 92 74 Fax: +32 2 880 92 75 office@ecf.com

www.ecf.com

EuroVelo organisation – National level

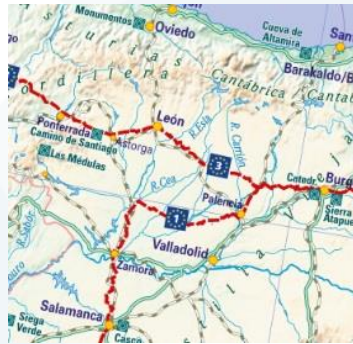


What does a NECC do?

[Please click here to access to the official NECC manual](#)

Mandatory tasks:

Route Coordination



Communication

Signposting Coordination



Reporting

www.ecf.com

What does a NECC do?

Optional tasks:

Network for services

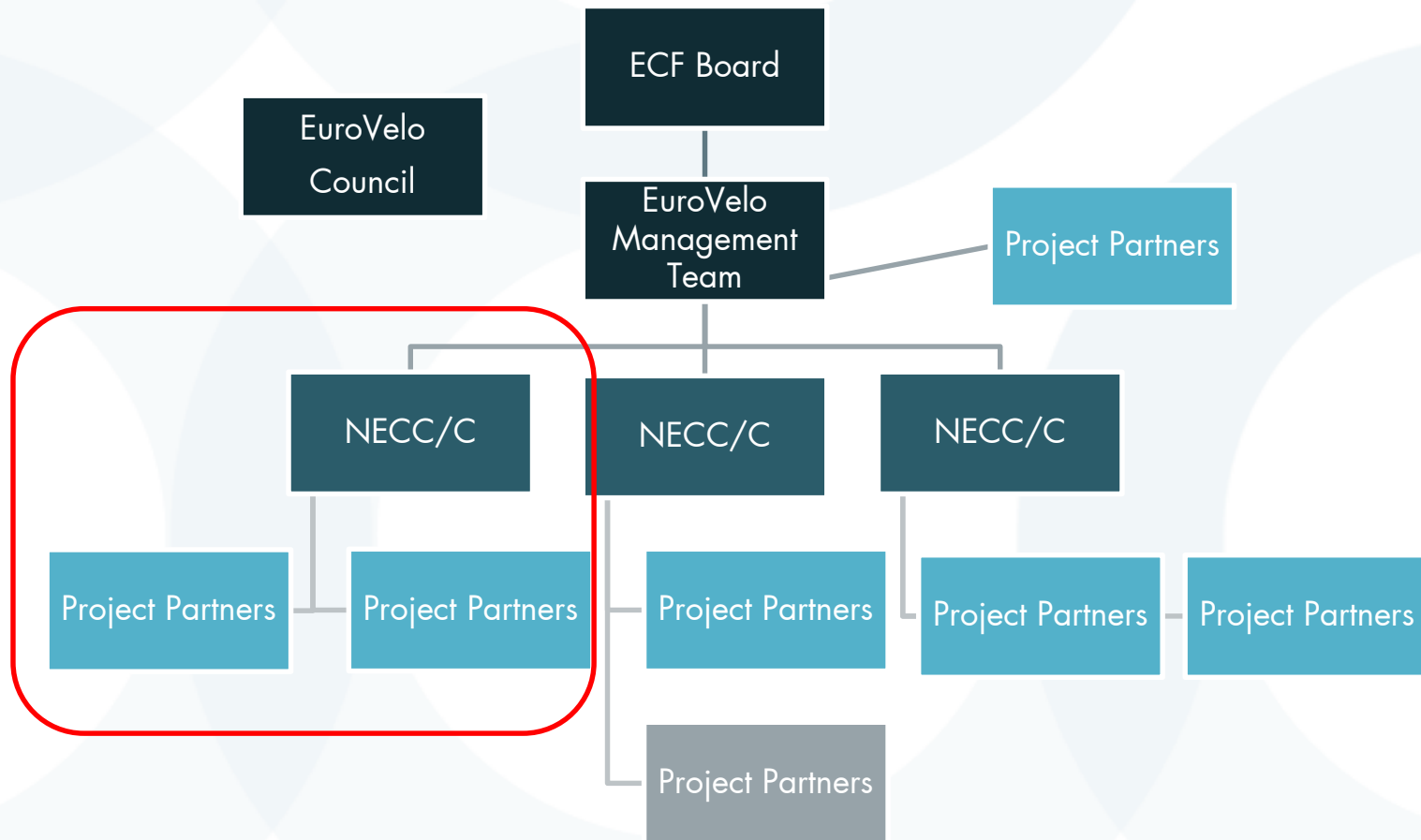


Public transport connections



Monitoring

EuroVelo organisation – National level

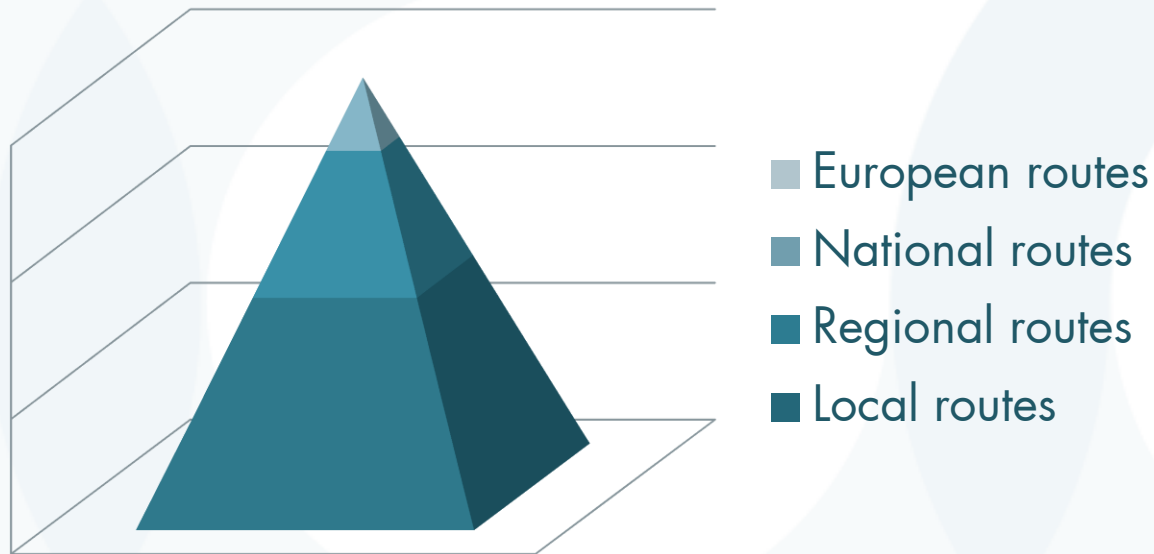


EuroVelo National Coordination



Ideal situation

Coordination of national routes and EuroVelo routes are in the same hands and cover the whole country



Solutions for coordination

- National Contact Points (NCP)
- National EuroVelo Coordinators (NEC) – single organisation - temporary solution
- National EuroVelo Coordination Centers (NECCs) - consortia - permanent solution

Members of an NECC

- Public authorities (ministries, agencies etc.) responsible for transport, tourism, regional development
- Public transport companies
- Private enterprises (tour operators etc.)
- NGO`s

Examples of NECC: The Netherlands



hét startpunt van elke fietstocht

Nederland Fietsland is een initiatief van Stichting Landelijk Fietsplatform

contact | webshop | printen

Fietsen in ... | **Knooppuntroutes** | **LF-routes** | Fietsvakantie | Fietsers Welkom! | Meer over ..

Home > Landelijke Fietsroutes > Overzicht LF-routes

Overzicht LF-routes



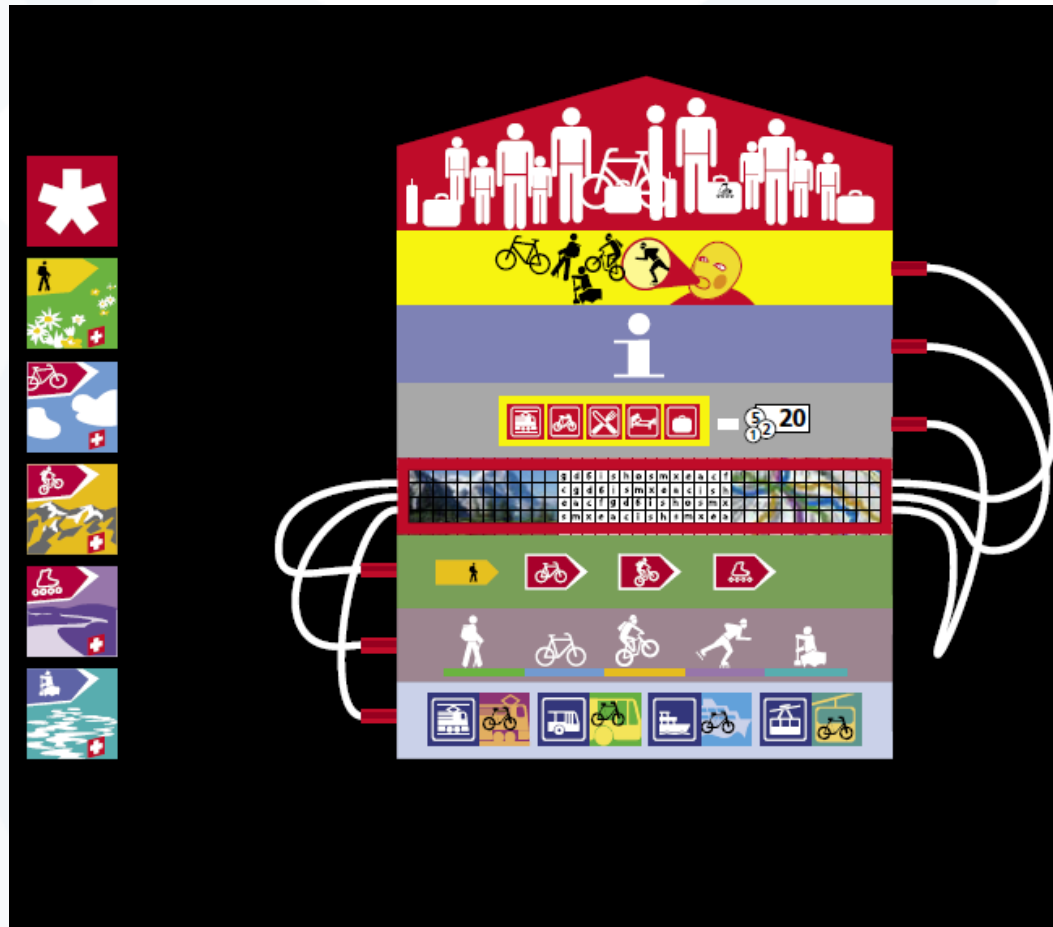
Ook handig voor vakantiefietsers

- ▶ Stel zelf je paklijst samen
- ▶ Fietsers Welkom! kwaliteitslabel
- ▶ Bordje weg? Meld het!
- ▶ Recreatieve fietsrouteplanner
- ▶ Fietsvervoer en verhuur
- ▶ Webwinkel



www.ecf.com

Examples of NECC: Switzerland



NECC: France



Examples of NECC: Czech Republic



nadace

partnerství

| LIDÉ A PŘÍRODA



Proposal for organization (1): Spain

National EuroVelo Council:

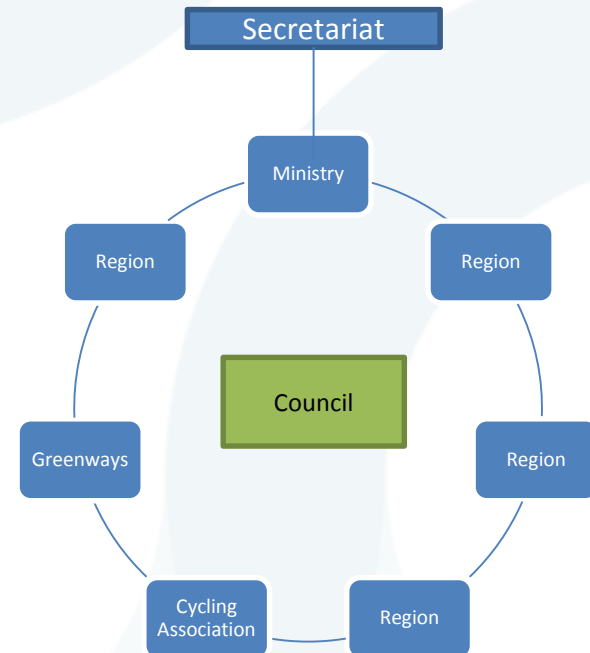
- Set the strategy for EuroVelo in Spain: communication, marketing, services network, etc.
- Regions, Ministry, cycling organisations, etc. take part in this council.
- Route modification, new routes, strategy, etc.
- Meets twice a year and supervise the secretariat.

Secretariat:

- The Ministry establishes the Secretariat.
- Coordination under the council mandate.
- Administrative task and main contact with the ECF.
- Route coordination.
- Participation in EU Project.
- Communication tasks.
- The Secretariat work under the control of the council that sets the strategy.

Financing:

- The Ministry is the main supporter.
- The participation in EU projects provide of extra resources.



Proposal for organization (2): Spain

National EuroVelo Council

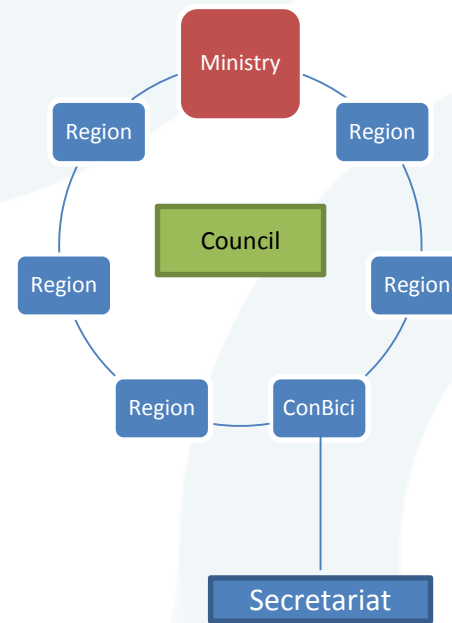
- Set the strategy for EuroVelo in Spain: communication, marketing, services network, etc.
- Regions, Ministry, cycling organisations, etc. take part in this council.
- Route modification, new routes, strategy, etc.
- Meets twice a year and supervises the secretariat.

Secretariat:

- Coordinates EuroVelo in Spain under the mandate of the council.
- Carry out the administrative tasks and the communication with the ECF.
- Route coordination.
- Participation in EU Projects.
- Communication tasks.
- The secretariat is supervised by the council.

Financing:

- Regions and Ministry support the coordination.
- The Secretariat obtains other resources from EU Projects, advertisements, services, etc.
- The regions and the Ministry support enough to cover the basic expenses and the participation in EU projects.





Thank you for listening!

For more information

eurovelo@ecf.com

www.eurovelo.com