



The ECF gratefully
acknowledges financial
support from the
European Commission



National Contributions

Annual NECC/Cs Meeting
Nantes, 2nd June 2015

Rue Franklin, 28 1000 Brussels, Belgium Phone: +32 2 880 92 74 Fax: +32 2 880 92 75 office@ecf.com

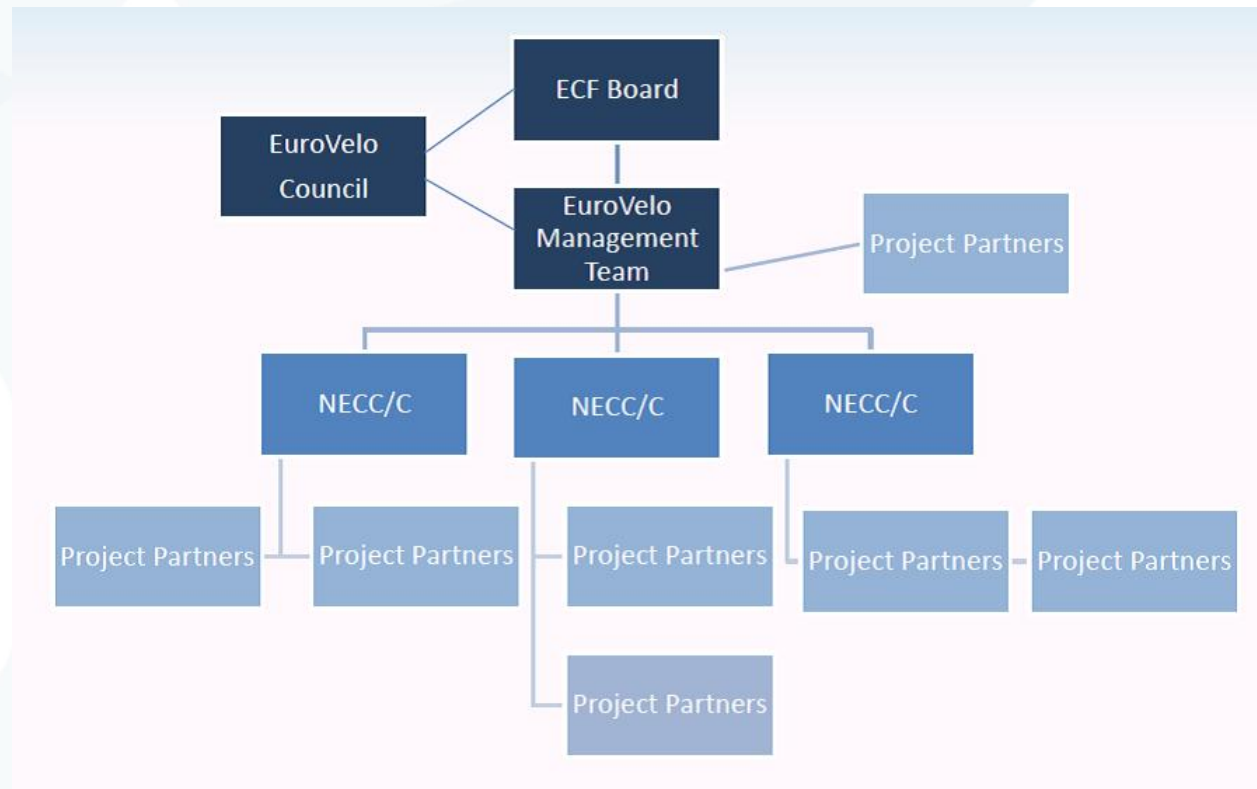
www.ecf.com

Contents

1. What are they?
2. What's happened so far?
3. Going forward
4. Questions and comments

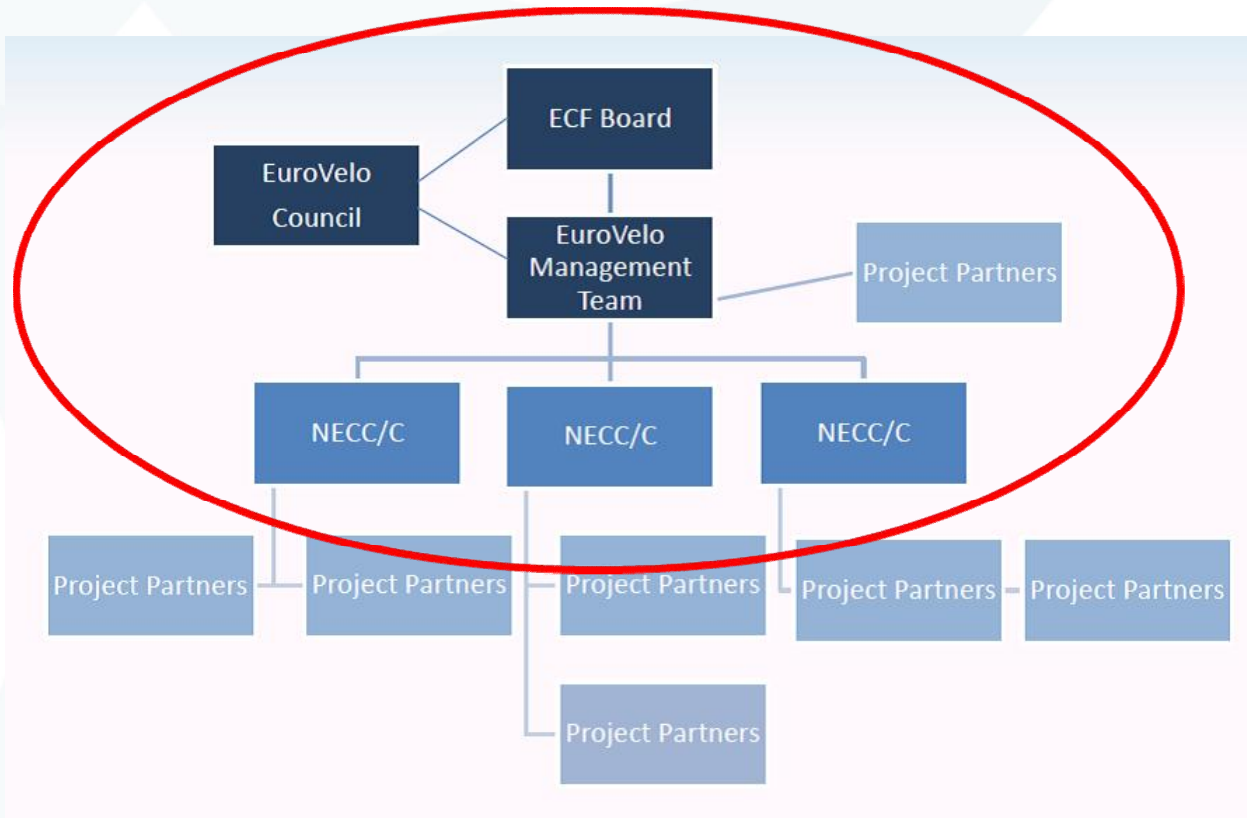
National Contributions

What are they?



National Contributions

What are they?



National Contributions

What do they cover?

Regular basic services:

- EuroVelo Council Meetings
- Updates to EuroVelo.org (including EuroVelo Overview Route Database)
- Monthly newsletter for professionals
- EuroVelo Publication Series
- National EuroVelo Coordination Centres and Coordinators network (including Annual Meeting)
- EuroVelo.com (basic version for each route and country)
- EuroVelo Social Media
- Answering individual requests
- Promoting European cycle routes to European and international markets
- (EuroVelo advocacy work e.g. TEN-T, regional policy etc.)

National Contributions

What don't they cover?

Regular advanced services:

- Advanced services (web development and management, coordination etc.) for specific routes (e.g. EuroVelo 15)
- EuroVelo map (reprint and distribution)
- More developed promotion and communication services on the European level

Additional “out of the ordinary” services:

- Route coordination actions (add new routes etc.)
- EuroVelo route certification
- Consultancy services for specific countries (advice, presentations, evaluation, training etc.)

National Contributions Objective

To provide sustainable financial background for the basic regular services

National Contributions

The proposal

1



1



KM of EuroVelo Route

Euro

National Contributions

Transitional arrangements

Type of NECC/C	2014	2015	2016
Immediate	Full	Full	Full
Transition	-	50%	Full

Country	NECC/C	Category	2014 Figure	2015 Figure	2016 Figure
Austria	Christian Weinberger	Transition	€ 0	€ 852.50	€ 1,705
Belarus	Minsk Cycling Community	Transition	€ 0	€ 500	€ 1,000
Belgium (Flanders)	Toerisme Vlaanderen	Immediate	€ 1,000	€ 1,000	€ 1,000
Bosnia and Herzegovina	Green Tour	Transition	€ 0	€ 500	€ 1,000
Czech Republic	Nadace Partnerstvi and CDV	Transition	€ 1,123	€ 1,123	€ 2,245
Denmark	Jesper Pørksen (on behalf of the Danish Cyclists' Federation),	Transition	€ 0	€ 832	€ 1,664
Estonia	Vänta Aga	Transition	€ 0	€ 1,340	€ 2,680
France	Départements & Régions Cyclables	Immediate	€ 7,112	€ 6,913	€ 6,913
Germany	Allgemeiner Deutscher FahrradClub	Transition	€ 0	€ 2,850	€ 5,700
Greece	Ecological Movement of Thessaloniki	Transition	€ 0	€ 715	€ 1,430
Ireland	National Trails Office	Immediate	€ 500	€ 1,593	€ 1,593
Italy	Federazione Italiana Amici della Bicicletta	Transition	€ 0	€ 2,734	€ 5,468
Lithuania	Lithuanian Cyclists' Community (LCC)	Transition	€ 0	€ 500	€ 1,000
Luxembourg	Lëtzebuenger Velos – Initiativ	Immediate	€ 500	€ 500	€ 1,000
The Netherlands	Stichting Landelijk Fietsplatform	Immediate	€ 1,451	€ 1,171	€ 1,171
Norway	Norwegian Public Roads Administration	Transition	€ 0	€ 2,700	€ 5,399
Poland (South)	M&G Consulting Marketing and Dr inż. Andrzej Zalewski, Coordinator	Transition	€ 0	€ 1,561	€ 3,122
Poland (North)	Pomeranian Association Common Europe	Transition	€ 0	€ 996	€ 1,991
Portugal	FPCUB	Transition	€ 0	€ 500	€ 1,000
Slovenia	Slovenian Cyclists' Network	Transition	€ 0	€ 500	€ 1,000
Switzerland	SwitzerlandMobility Foundation	Immediate	€ 1,000	€ 1,000	€ 1,000
Turkey	EnverCevko	Transition	€ 0	€ 500	€ 1,000
Ukraine	Kiev Cyclists Association	Transition	€ 0	€ 500	€ 1,000
UK	Sustrans	Immediate	€ 4,864	€ 4,864	€ 4,864
	Totals		€ 17,550	€ 36,244.5	€ 55,945

National Contributions Going forward

For Transitional NECC/Cs:

- Be prepared that an invoice for 50% of the National Contribution will be sent to you soon.
- You don't necessarily have to pay it yourself but you should coordinate the payment.
- Continue to work towards establishing a full NECC/Cs (to help share the costs).
- If you think it will be difficult to meet the timetable, please contact us and see if we can find a solution.

National Contributions

Questions and comments?



Thank you for listening

For more information
eurovelo@ecf.com

Rue Franklin, 28 1000 Brussels, Belgium Phone: +32 2 880 92 74 Fax: +32 2 880 92 75 office@ecf.com

www.ecf.com